

FAST-RING AUTOMATIC TURNTABLE STRETCH WRAPPER



DESCRIPTION

The FAST-RING fully automatic stretch film wrapping machine is a suspended turntable design.

The unit integrates with an unpowered roller conveyor for the in-feed and out-feed of palletised loads. Because this type of stretch wrapper uses a suspended turntable to apply the film, the load remains steady and stable during wrapping.

The FAST-RING features a touch-screen display where all necessary wrapping parameters may be programmed, and the machine status can be checked. As the control cabinet is structurally integrated, it offers easy access without need to enter the working area.

The FAST-RING can automate the wrapping process from start to finish.

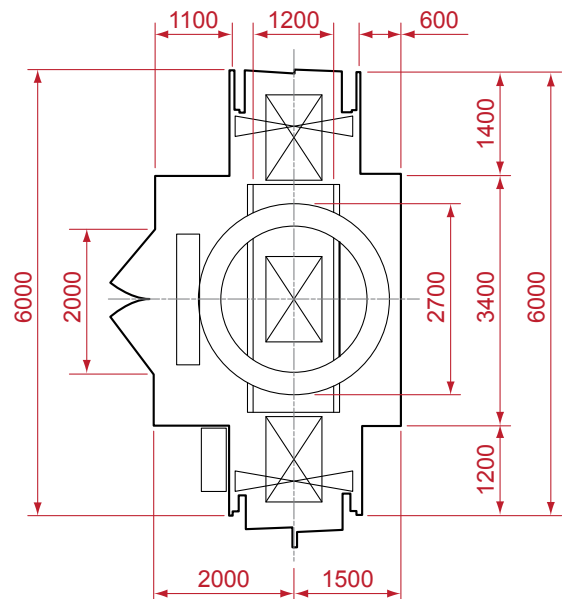
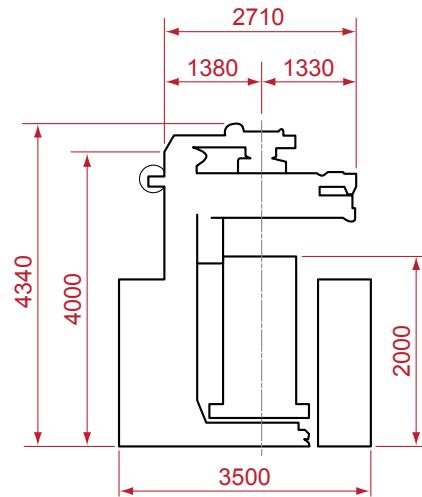
FEATURES

- Interfacing to Powered In-feed and Out-feed Conveyors
- Powered Film Pre-Stretching
- Suitable for all Types of Stretching Film
- Different Wrapping Modes and Programs Set Through LCD Control Display
- Progressive Start and Exact Stop on Film Reel Carriage
- Adjustable Carriage Speed
- Automatic Film Gripper, Cutting Arm and Hot Welding Kit Integrated in the Rotating Arm
- Hot Wire Film Cutting System
- PLC-Controlled with Touch-Screen
- Harmonics Suppressor Line Filter
- Automatic Pallet Height Detection by Photocell
- Touch-Screen Controller Records Completed Pallets, Errors and Other Statistics

OPTIONS

- Powered Top Platen to Stabilise Load with or without Blowing Device
- Net Hooking and Cutting System
- Fully Automatic Top Sheet Dispenser
- Safety Interlock Guarding
- Muting Light Curtains
- Film Narrower
- Pallet Dispenser
- Pallet Elevator
- In-feed/Out-feed 90° Configuration with Powered Turntable
- Different Load Sizes
- Load Reinforcement up to 2,000kg
- Chain Conveyors
- In-feed/Out-feed Conveyors of Different Sizes
- Working Heights Greater than 550mm
- Conveying Speeds Greater than 15m/minute

DIMENSIONS



SPECIFICATIONS

- Maximum Pallet Height: 2,000mm
- Maximum Pallet Size: 1,200mm x 1,200mm
- Maximum Pallet Weight: 1,800kg
- Total Weight: 1,800kg
- Power Required: 380VAC or 220VAC
- Maximum Power Consumption: 6kW
- Pneumatic Air Pressure: 6 bar
- Air Consumption: 8 litres/minute
- Roller Conveyor Speed: Up to 11.5m/minute
- Working Height: 500mm
- Environmental Protection: IP-54
- Output: Up to 00 pallets/hour (Under Suitable Conditions)